



# CAIMAN

DEFINING A NEW CLASS OF  
**MOBILE RUGGED UNCREWED**  
**SURFACE VEHICLE (MR USV)**



SMALL



STURDY



STABLE



SONAR



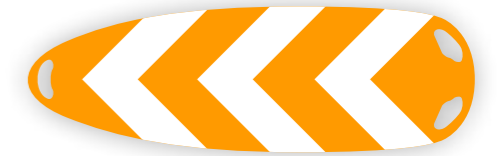
# CAIMAN

## ENGINEERED FOR PROFESSIONAL DEMANDS

CAIMAN is an ultra-compact, highly integrated uncrewed surface vessel (MR-USV) specifically developed for demanding marine survey and reconnaissance missions. Whether deployed by police, military, disaster relief agencies, or scientific expeditions, CAIMAN excels with exceptional robustness, precision, and mobility.

Its lightweight, portable design, durable and corrosion-resistant construction, and state-of-the-art sensor technology ensure reliable results even under the toughest conditions. Cutting-edge navigation and autopilot systems, powerful propulsion, and long battery life make CAIMAN the ideal tool when efficiency, safety, and accuracy are paramount.

Discover the future of maritime exploration with CAIMAN – faster, safer, and more professional than ever before.



## COMPACT HANDLING

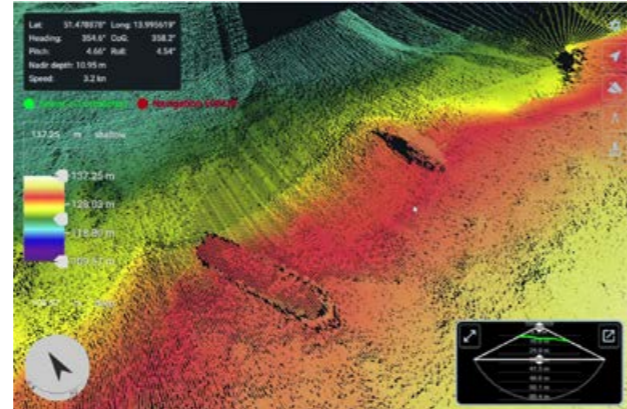
DESIGNED FOR REAL-WORLD MISSIONS



- › **Compact Design:** The smallest possible size ensures easy maneuverability and transportability.
- › **Lightweight:** Weighing in at less than 20 kg, it is the lightest vessel of its kind.
- › **Multiple Grips:** Designed with numerous handles for effortless transportation and retrieval.
- › **Backpack Transport:** Can be conveniently carried as a backpack over longer distances.
- › **Compact Storage:** Fits easily in a standard car trunk.

## PROFESSIONAL-GRADE TECHNOLOGY

PRECISION THAT INSPIRES CONFIDENCE



- › **Professional-Grade Sonars:** Equipped with advanced, high-precision multibeam sonars from Norbit and other reputable manufacturers.
- › **Dual GNSS with RTK:** Offers centimeter-accurate positioning for precise survey results.
- › **Autonomy:** Features a sophisticated autopilot for independent scanning of complex areas.
- › **Robust Communication:** Maintains a strong, long-range radio connection with the land station.
- › **Real-Time Data Display:** Provides immediate data feedback for the operator.
- › **Front Camera:** Enhances navigation capabilities in challenging waters.

## POWERFUL PERFORMANCE

REAL-TIME AWARENESS AND SEAMLESS CONTROL



- › **Strong Propulsion:** Dual powerful drives ensure reliability even in strong currents and quick transit to targets.
- › **Top Speed:** Achieves speeds of up to 10 knots.
- › **Safe Operation in Strong Currents:** Designed for reliable performance in currents up to 5 knots.
- › **Surf-Zone Capability:** First hand-deployable USV engineered for operation in the surf zone.

## SIMPLICITY IN OPERATION

SMART SOLUTIONS INSIDE



- › **No Assembly Required:** Ready to operate out of the box.
- › **Two-Button Startup:** Simple, fast system activation.
- › **No Specialized Training Required:** Designed for intuitive operation.
- › **Launch & Recovery Anywhere:** Flexible deployment in virtually any environment.
- › **All-Condition Capability:** Built to perform reliably — just get the job done.

**KUMUII** 



**FOR  
SUBSEA SURVEY  
AND  
RECONNAISSANCE**

## TECHNICAL SPECIFICATIONS

Dimensions (LxWxH)	122 x 40 x 35 cm
Draft	20 cm
Weight without sonar	15 kg
Weight with standard MBS	20 kg
Propulsion	2x electric thrusters
Endurance*	Up to 7h @ 2kn, 4h @ 3kn
Range*	Up to 14nm @ 2kn, 12nm @ 3kn

\* Depending on payload, batteries, velocity and conditions.

Survey speed	2 – 6 kn
Top speed*	10 kn
System components	RC with 7" or 10" touchscreen
Transport	Hard Case or backpack
Range	> 1 km

Communication	Standard: Dual-band WiFi (2.4/5 GHz) with frequency hopping. Optional: MIL spec RC system with integrated StreamCaster or DoodleLabs dual-band radio.
Payload	Single Beam Echo Sounder, Entry Class Multibeam Sonar (M1, M7), Professional Grade Multibeam Sonar (WBMS, iWBMS X), 3D Side Scan Sonar (PingDSP)

## UNMATCHED ROBUSTNESS

### FOR THE HARSHEST ENVIRONMENTS

- › **Highly Integrated:** All sensitive components are safely housed within the durable casing.
- › **Durable Shell:** The impact-resistant shell withstands everyday challenges, surviving drops from heights greater than 1 meter.
- › **Self-Righting:** Capable of being dropped from walls, bridges, ships, or helicopters at heights of up to 10 meters.
- › **Corrosion-Resistant:** Built with non-corrosive materials for operation in seawater and industrial wastewater environments.

ENGINEERED  
FOR EXCELLENCE.  
BUILT FOR EXTREMES.

[KUMUII.COM](http://KUMUII.COM)



KUMUII   
CAIMAN



# THE FUTURE OF MARITIME MISSIONS



CAIMAN sets a new standard for mobile, rugged uncrewed surface vessels.

Engineered for elite users – proven in the world's toughest missions.

**Choose Caiman. Lead your team into the future of maritime survey and reconnaissance.**

## CONTACT

Contact us for a live demonstration and discover the difference that truly professional gear makes.

## KUMUII GmbH

Warnemünder Str. 4a, 14199 Berlin, Germany

[info@kumuii.com](mailto:info@kumuii.com)

The following Intellectual Property Right applications or registered rights apply for Caiman USV:

US patent application US 19/410,673 Title: „Maritime Drone“

International patent application PCT/EP2025/088882 Title: „Maritime Drone“

Community Design Registrations 015094529-0001 and 015094529-0002

International Design Registrations DM/250745 for US (US 35/527,133 application) and NO (registration DM/250745)

Distributed by