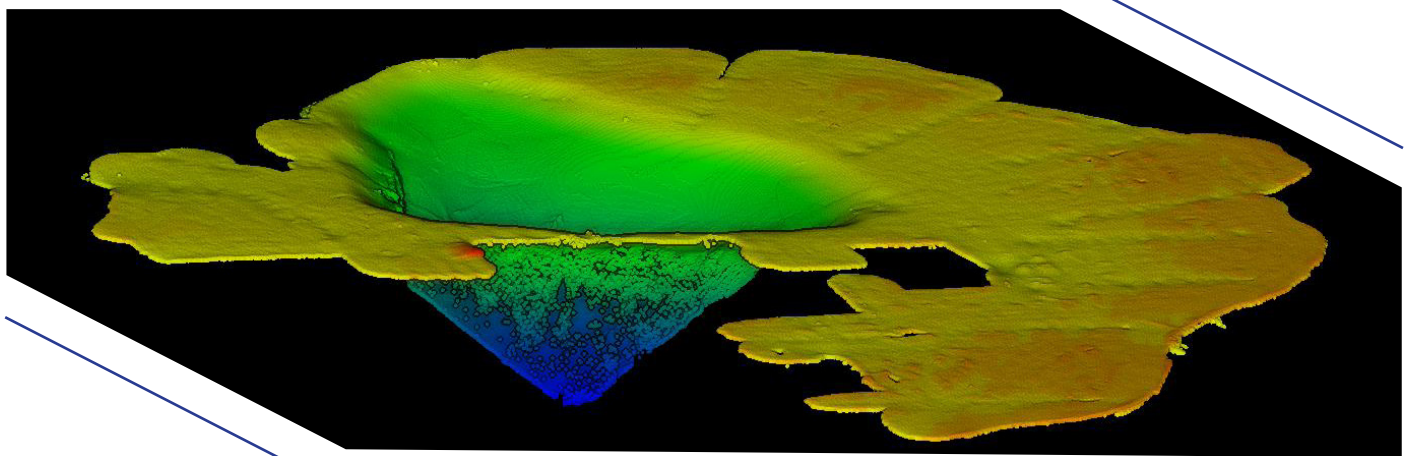


## M4 Multibeam Sonar

M4 is a highly-versatile, high-resolution multibeam echo sounder which is also extremely simple to use and to integrate. Universities (Engineering, Robotics, Archeology etc.) will find this affordable cutting-edge sonar to be the perfect choice for advanced programs. The hydrodynamic form factor and low power consumption makes M4 the ideal choice for small autonomous surface vehicles and AUVs alike.

Ponds and Lakes	★★★★★	University Research	★★★★★
Harbors/Construction	★★★★	Dredging	★★★★
Coastal Waters	★★★★	Archeology	★★★★



### Specifications:

<b>Swath coverage</b>	Up to 130 degrees
<b>Number of RX beams</b>	512
<b>TX beam width along-track</b>	1.45°
<b>RX beam width</b>	1° ±0.1
<b>Range</b>	>200m
<b>Range accuracy</b>	<10mm
<b>Beam distribution</b>	Equi-Distant and equi-angular beam distribution
<b>Pressure rating</b>	60m
<b>Ping Rate</b>	50 Hz
<b>Outputs</b>	Bathymetry, Side Scan
<b>Compatible with</b>	Hypack, Qinsy, BeamworX, SonarWiz a.o
<b>Weight w. bracket</b>	Air: 3.4 kg Water: 1.1 kg



data acquisition included

