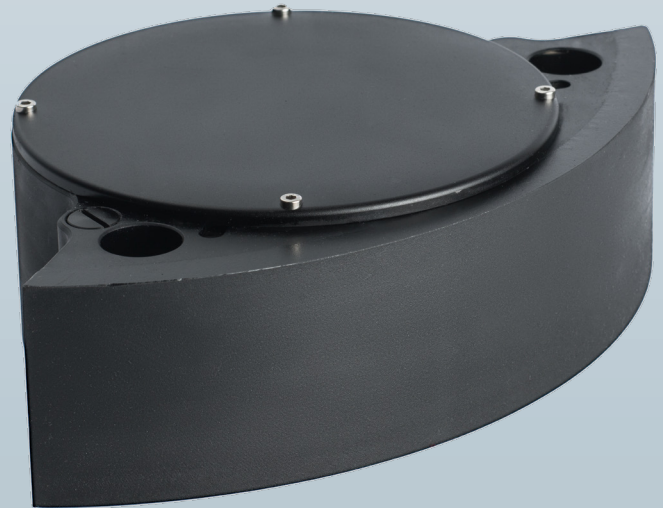


WIDEBAND MULTIBEAM SONAR

Compact Forward Looking

The WBMS-series are ultra compact sonars explicitly designed for use on moving platforms. NORBIT's wideband multibeam technology allows long range real-time image updates, while simultaneously achieving high range resolution, allowing you to explore more.

The WBMS-series are based on a flexible sonar platform that utilises the latest in analogue and digital signal processing. With broad R&D expertise, NORBIT has developed, from the ground-up, exciting new technology that allows existing and new applications to benefit from the advantages offered by a compact wideband curved-array multibeam sonar.



Features

- ✓ Long Range
- ✓ High Update Rate
- ✓ High Angular Resolution
- ✓ High Range Resolution
- ✓ Ethernet Interface
- ✓ Ultra Compact Single Unit Solution
- ✓ Standard Product Delivery Incl. Shipping Case and Sonar Interface Unit

Applications

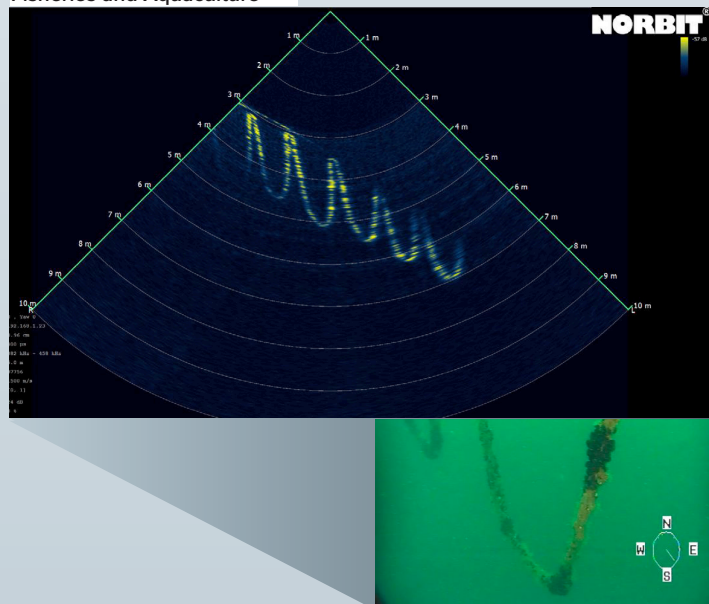
- ✓ Inspection (ROV, AUV and other Moving Platforms)
- ✓ Obstacle Avoidance
- ✓ Search and Recovery
- ✓ Automatic Leak Detection
- ✓ Marine Construction
- ✓ Fisheries
- ✓ Sciences

Options

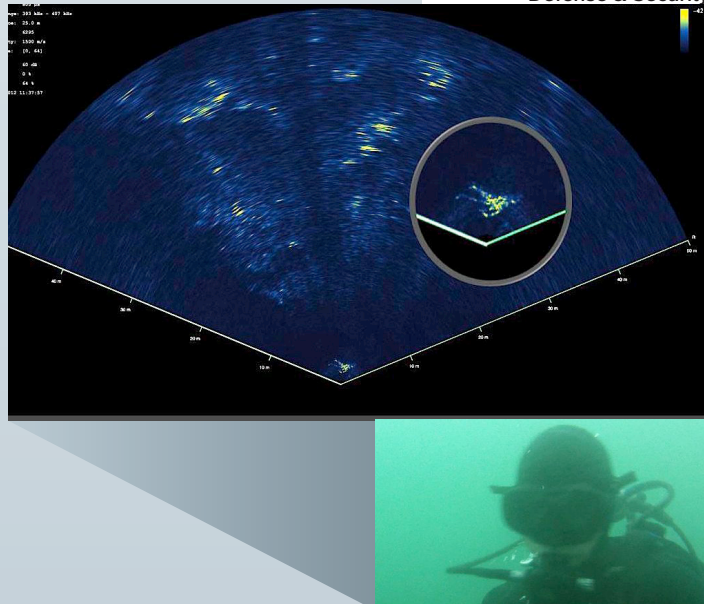
- ✓ Wide Coverage Projector (up to 180°)
- ✓ Depth Rating: 900m, 4500m or 6000m
- ✓ Custom Vertical Beam-Width (2-30 Deg)
- ✓ VDSL Data-link
- ✓ Weather Rated Command/Control Laptop
- ✓ AUV, ROV Interconnectivity kits
- ✓ Custom Cable Length Options
- ✓ ROV Version

NORBIT Compact Multibeam Echo Sounder

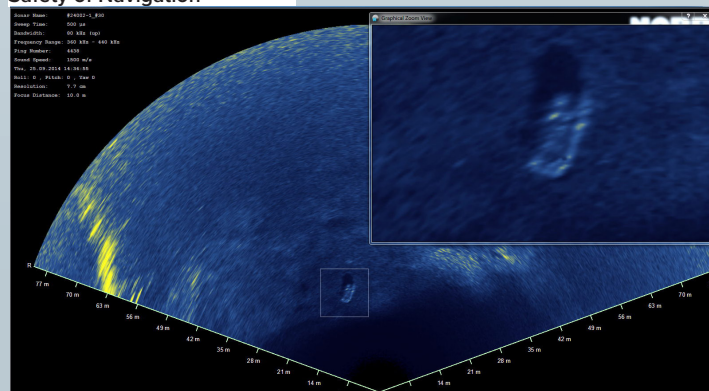
Fisheries and Aquaculture



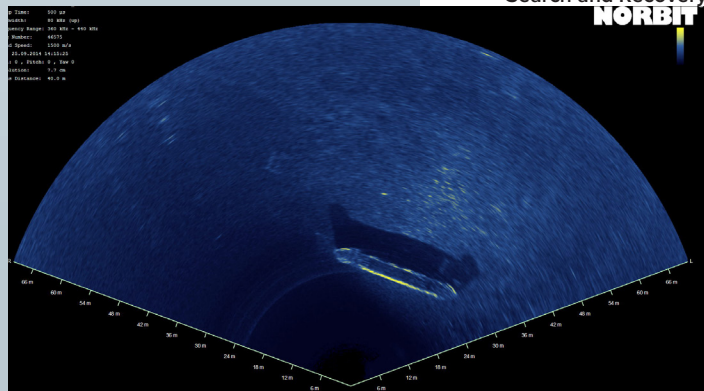
Defense & Security



Safety of Navigation

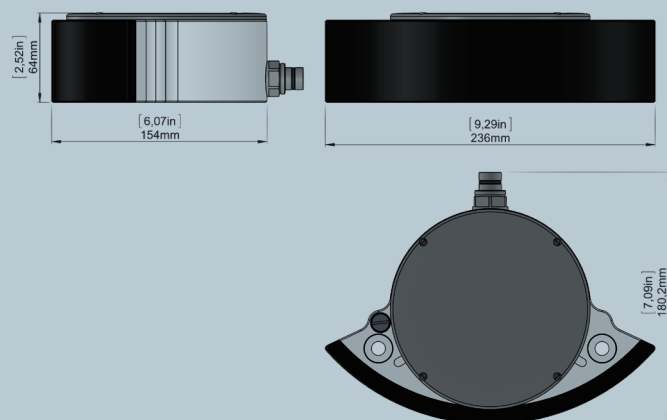


Search and Recovery



TECHNICAL SPECIFICATION

| | |
|---------------------|---|
| HORIZONTAL COVERAGE | 7° to 180° (TYPICAL 120°) 150° OPTION |
| VERTICAL COVERAGE | >25° |
| ANGLE RESOLUTION | <0.9° |
| OPERATING FREQUENCY | 400kHz +/- 40kHz |
| RANGE RESOLUTION | < 10mm |
| RANGE | 250m (NOMINAL 100m) @ 400kHz |
| UPDATE RATE | 60Hz |
| DEPTH RATING | UP TO 900m, 4500m or 6000m |
| WEIGHT - DRY | < 2.3 kg (2.9 kg w. WIDE COVERAGE PROJECTOR) |
| WEIGHT - WET | APPROX 0 kg (APP. 0.6kg w. WIDE COVERAGE PROJECTOR) |
| CABLE LENGTH | STD. 8m, OPT.: 2m, 25m, 50m PIGTAIL, 600m WITH VDSL |
| VOLTAGE | 10-28VDC OR 100-240VAC (ROV DIRECT: 24-29VDC) |
| POWER CONSUMPTION | 30W |
| INTERFACES | 100Mbps/s ETHERNET 16Mbps/s OPTIONAL VDSL |
| OPERATING TEMP. | -4°C to +40°C |
| STORAGE TEMP. | -20°C to +60°C |



Part #12002-AAFAA4

Illustration of standard configuration